



Cat#	Type	Minimum scale	ValueMeasurement volume	Accuracy	Reproducible measurement	Compatible tip	Packaging
NT-2	Nexty Single Channel Pipetter, 0.2~2μl	0.001μl	0.2μl	≤±15.0%	≤8.0%	204/207	1pc
			2μl	≤±2.5%	≤1.0%		
NT-10	Nexty Single Channel Pipetter, 1~10μl	0.01μl	1μl	≤±5.0%	≤2.5%	204/207	1pc
			10μl	≤±1.0%	≤0.5%		
NT-20	Nexty Single Channel Pipetter, 2~20μl	0.01μl	2μl	≤±6.0%	≤3.0%	703/705	1pc
			20μl	≤±1.0%	≤0.5%		
NT-100	Nexty Single Channel Pipetter, 10~100μl	0.1μl	10μl	≤±2.0%	≤1.0%	703/705	1pc
			100μl	≤±0.8%	≤0.3%		
NT-200	Nexty Single Channel Pipetter, 20~200μl	0.1μl	20μl	≤±2.0%	≤1.0%	703/705	1pc
			200μl	≤±0.8%	≤0.3%		
NT-1000	Nexty Single Channel Pipetter, 100~1000μl	1μl	100μl	≤±2.0%	≤0.6%	706/804	1pc
			1000μl	≤±0.8%	≤0.3%		
NT-5000	Nexty Single Channel Pipetter, 500~5000μl	5μl	500μl	≤±2.0%	≤0.6%	401	1pc
			5000μl	≤±0.8%	≤0.3%		
NT-810	Nexty Multi 8-channel Pipettor, 1~10μl	0.01μl	1μl	≤±8.0%	≤5.0%	204C/207C	1pc
			10μl	≤±2.0%	≤1.0%		
NT-8200	Nexty Multi 8-channel Pipettor, 20~200μl	0.1μl	20μl	≤±8.0%	≤1.0%	703/705/503	1pc
			200μl	≤±1.0%	≤0.5%		

WATSON®

NEXTY

New from Watson - "NEXTY Pipettor"
The NEXT GENERATION in micropipettors!
Easy to use and reduces hand & arm fatigue

MICROPIETTOR

[New features] Turbo Dial for large volume setting changes

[Excellent Quality] Durable high quality construction using lightweight PBT plastic. ISO8655

[Economical] Superior quality at an affordable price

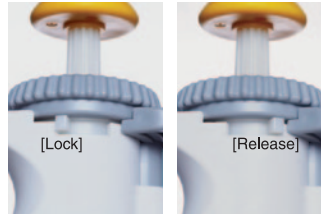
Triple Speed Turbo Dial

Nexty's Turbo-Dial is great for quick high volume changes using one hand.



Lever Lock

Locks the push button and Turbo-Dial to avoid accidental discharge when setting the volume.



User Friendly Digital Display

Easy to read, three digit volume display.



Easy handling

Comfortable and secure grip.



Short Overall Length

Nexty's short design makes for easy use on a clean bench.

Lightweight & Solid Design

Nexty is constructed with strong, lightweight PBT plastic for long life.



Partially Autoclavable

The nose cone and ejection cone are easily removed and can be autoclaved.

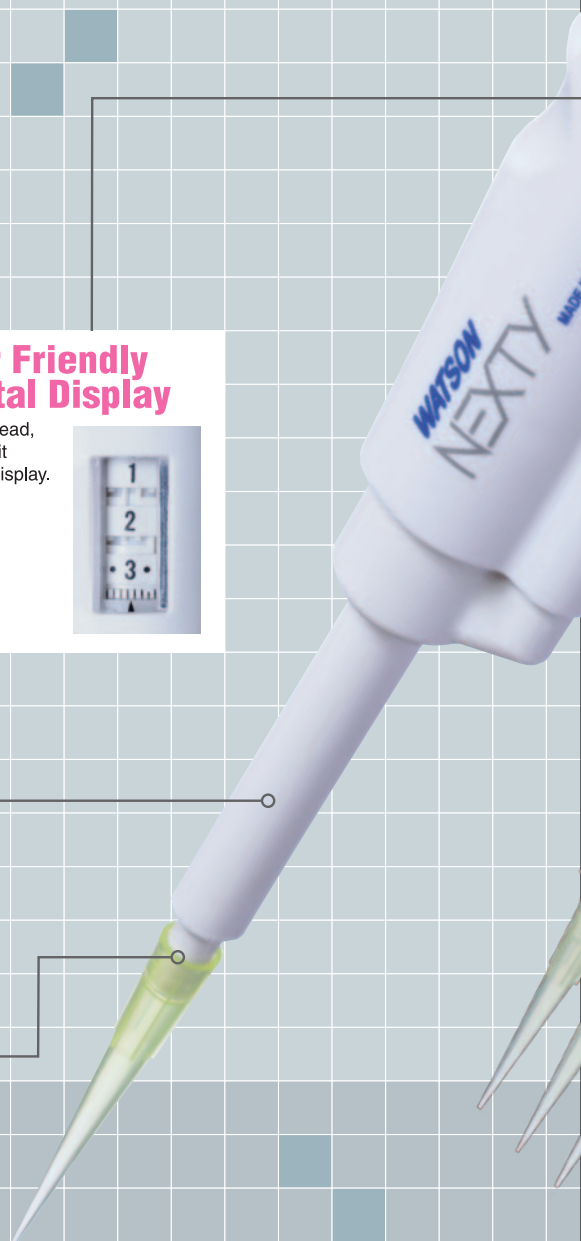
(Single Channel Pipettor only)



Optional Fittings

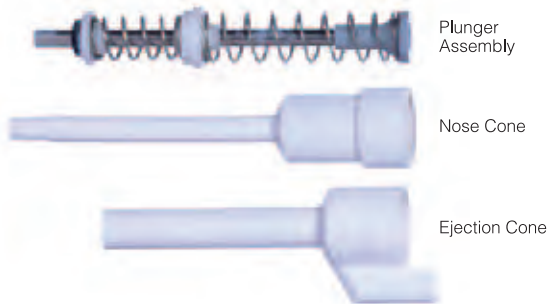
Optional metallic nose cones are available for the 2/10/20µl models.

(Single Channel Pipettor only)

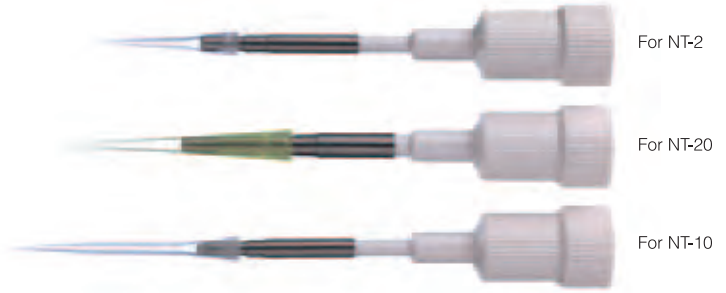


Maintenance Parts for Single Channel Pipetter

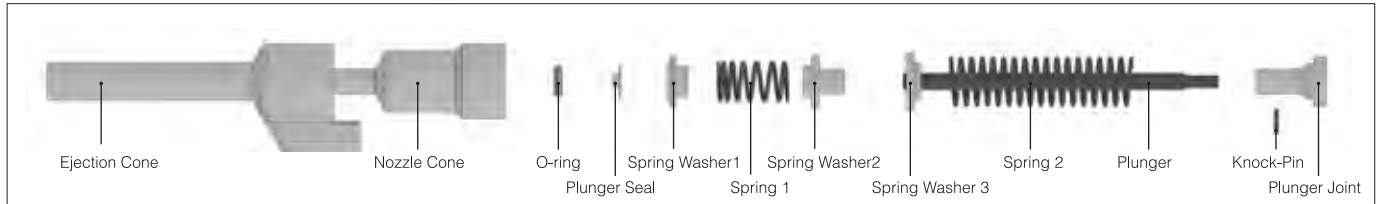
■ Nozzle Set



■ Metal Nozzle (optional)



■ Assembly Drawing of the nozzle set (NT-200)



		for NT-2	for NT-10	for NT-20	for NT-100	for NT-200	for NT-1000	for NT-5000
Nozzle Set	Cat#	2NS	10NS	20NS	100NS	200NS	1000NS	5000NS
Nozzle Cone		○	○	○	○	○	○	○
Nozzle Cone Joint		-	-	-	-	-	-	○
Ejection Cone		○	○	○	○	○	○	○
Plunger		○	○	○	○	○	○	○
Plunger Joint		○	○	○	○	○	○	○
Plunger Seal		○	○	○	○	○	○	○
O-ring		○	○	○	○	○	○	○
Seal Cone 1		○	○	○	-	-	-	-
Seal Cone2		-	-	-	-	-	○	-
Seal Cone3		-	-	-	-	-	-	○
Seal Cone4		-	-	-	-	-	-	○
Spring Washer 1		○	○	○	○	○	○	-
Spring Washer 2		○	○	○	○	○	○	○
Spring Washer 3		○	○	○	○	○	○	○
Spring 1		○	○	○	○	○	○	○
Spring 2		○	○	○	○	○	○	○
Knock-Pin		○	○	○	○	○	○	○

Metal Nozzle	Cat#	2M	10M	20M
---------------------	------	----	-----	-----

For more information on WATSON Co.,Ltd.,

Please visit our website at <http://www.watson.co.jp>

Please don't hesitate to contact us anytime.

E-mail: tcr@watson.co.jp



Sales agency:
WATSON CO., LTD.

Export Division:
2-2-7, Murotani Nishi-ku Kobe, 651-2241 JAPAN
TEL 81-78-991-4489 FAX 81-78-991-4491
Head office:
3-37-22, Kanda-Sakumacho Chiyoda-ku Tokyo,
101-0025 JAPAN
TEL 81-3-5823-8608 FAX 81-3-5823-8609
E-mail: tcr@watson.co.jp

Manufacturer:
FUKAE KASEI CO., LTD.
<http://www.watson.co.jp>

※The specification and the price etc. of the product might change without a previous notice.

WATSON[®] NEXTY

Single Channel & Multi 8-Channel Pipettors



NEW

The "Next Generation" in Pipettors

Made in JAPAN

<http://www.watson.co.jp>



Large push button

The mushroom shaped push button and our innovative spring mechanism reduce stress on the thumb and allow for light touch operation of the Nexty pipettors. This button also works as a dial for minimal volume setting changes (1/1000 scale)



The Nexty Pipettor series is color coded for easy identification.



Available in Right and Left handed models.

All Nexty Pipettors are available in either right and left handed models. The side ejection level is positioned for ease of use with the right or left thumb.



Nexty Multi 8-Channel Pipettor with a "Perfect Fit Mounting System"

Nexty's suspension loaded nose cones move separately for uniform loading of pipette tips. This system ensures correct fitting of the tips and eliminates mis-mounting problems.



Accessory: Pipettor Holder

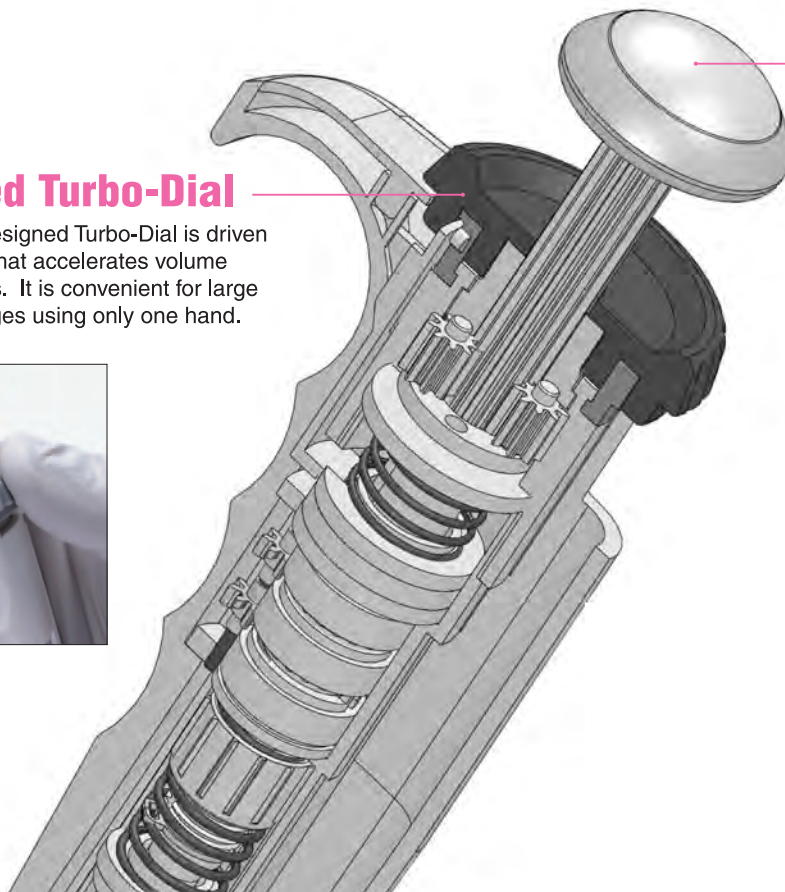
Nexty's Pipettor Holder is easily mounted on any wall surface. Once mounted simply slide the Nexty Pipettor in from the top or side.



WATSON'S INNOVATIVE TURBO-DIAL DESIGN

Triple Speed Turbo-Dial

Watson's uniquely designed Turbo-Dial is driven by a planetary gear that accelerates volume changes by 3.5 times. It is convenient for large volume setting changes using only one hand.



Push Button

Turn the push button at the top of the unit for standard volume setting.

As you press down on the button the first lock you feel sets the volume, and the second lock will discharge the liquid.

This dial is also used for minimal volume settings (1/1000 scale)

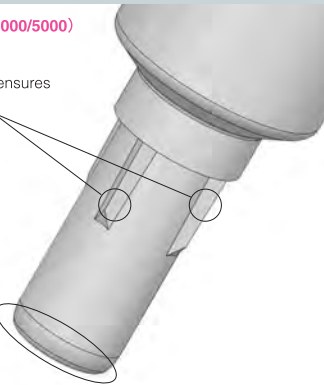


EASY & SECURE FITTING NOZZLE

Fitting Rib (NT-1000/5000)

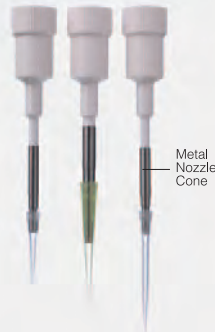
The unique rib design ensures a stable fit for the tip

The end of the nozzle forms a perfect seal with the tip.



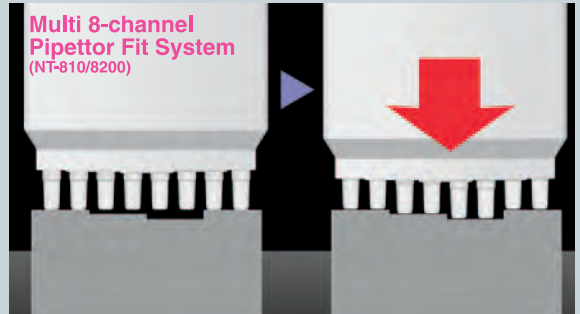
This specially shaped nozzle cone on the 1000 / 5000µl version ensures a secure fit with minimal effort.

Metal Nozzle (NT-2/10/20)



Optional metal nose cones can be used to measure small volumes such as 2/10/20µl. Specify this option when placing your order.

Multi 8-channel Pipettor Fit System (NT-810/8200)



The nose cones on the 8 channel pipettor are independently suspension loaded. This allows for consistent and uniform mounting of the tips on each nose cone. Mis-mounting tips are no longer a problem.

Made in Japan

Nexty Pipetter is designed and manufactured by Fukae Kasei Company in Japan. Each unit undergoes extensive calibration and testing prior to shipment.

Quality Control

Strict quality control standards are maintained per ISO 8655 certification.



Quality Certification

Nexty Pipettors are certified to be within specifications for one year from the date of purchase. Each unit comes with a warranty certificate specifying the serial number and test date of the unit.

Please note the TEST DATE on your inspection certificate.

